

# C&K P Series Low Profile Key Switches



## Features/Benefits

- Low profile design
- Multi-pole and multi-position
- Panel and PCB mounting
- Variety of termination styles

## Typical Applications

- CATV
- Low cost security devices
- Lawn equipment



## Specifications

**CONTACT RATING:** Q contact material: 4 AMPS @ 125 V AC or 28 V DC; 2 AMPS @ 250 V AC (UL/CSA). See page K-50 for additional ratings.

**ELECTRICAL LIFE:** 10,000 make-and-break cycles at full load.

**CONTACT RESISTANCE:** Below 10 mΩ typ. initial @ 2-4 V DC, 100 mA, for both silver and gold plated contacts.

**INSULATION RESISTANCE:** 10<sup>9</sup> Ω min.

**DIELECTRIC STRENGTH:** 1,000 Vrms min. @ sea level.

**INDEXING:** 45° or 90°, 2-3 positions. Other functions available, consult Customer Service Center.

## Materials

**HOUSING:** One piece, 6/6 nylon (UL94V-2), black. Finish, matte.

**KEY:** One nickel plated brass key.

**CONTACTS AND TERMINALS:** Q contact material: Copper, silver plated. See page K-50 for additional contact materials.

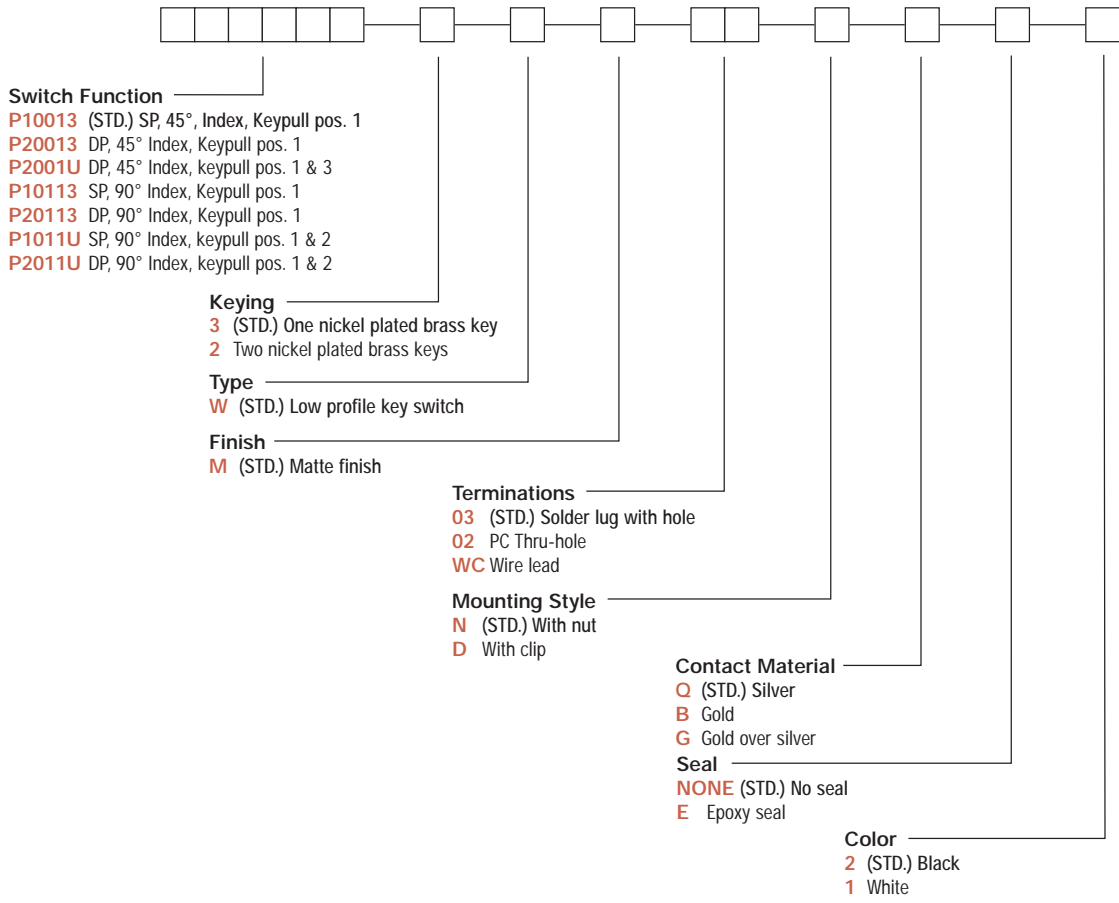
**CONTACT SPRING:** Music wire or stainless steel.

**TERMINAL SEAL:** Epoxy.

**NOTE:** Specifications and materials listed above are for switches with standard options. For information on specific and custom switchlocks, consult Customer Service Center.

## Build-A-Switch

To order, simply select desired option from each category and place in the appropriate box. Available options are shown and described on pages K-49 thru K-50. For additional options not shown in catalog, consult Customer Service Center.



Rotary  
K

# C&K P Series Low Profile Key Switches

## SWITCH FUNCTION



NO. POLES	MODEL NO.	CONNECTED TERMINALS (see terminal location below.)			KEY PULL POSITIONS	SWITCH CONFIGURATION	INDEXING
		POS.1	POS. 2	POS. 3			
SP DP	<b>P10013 (STD.)</b> <b>P20013</b>	8-1 8-1,4-5	1-2 1-2,5-6	2-3 2-3, 6-7	Position 1		45°
DP	<b>P2001U</b>	8-1,4-5	1-2,5-6	2-3, 6-7	Position 1 & 3		
SP DP	<b>P10113</b> <b>P20113</b>	8-1 8-1,4-5	1-3 1-3,5-7		Position 1		90°
SP DP	<b>P1011U</b> <b>P2011U</b>	8-1 8-1,4-5	1-3 1-3,5-7		Position 1 & 2		

### LEGEND

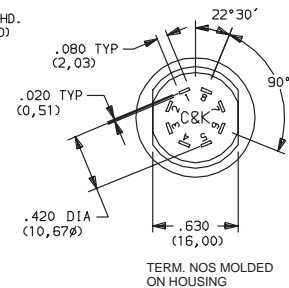
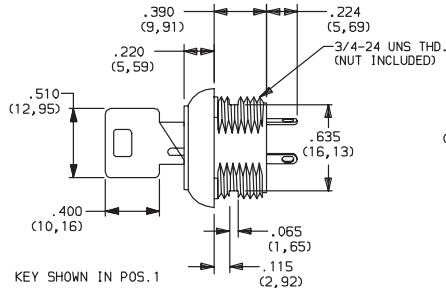
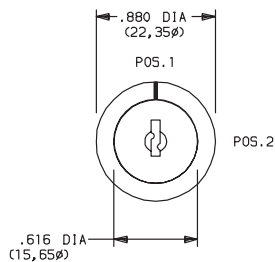
- = Detent Positions (45° or 90°).
- ⊙ = Key pull possible in these positions.
- = Stop positions.

### TERMINAL NUMBERS



Terminal numbers molded on bottom of housing.

All models with all options when ordered with 'G' or 'Q' contact material.



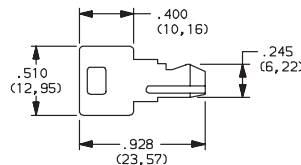
TERM. NOS MOLDED ON HOUSING

## KEYING

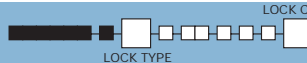


- 3** (STD.) ONE NICKEL PLATED BRASS KEY
- 2** TWO NICKEL PLATED BRASS KEYS

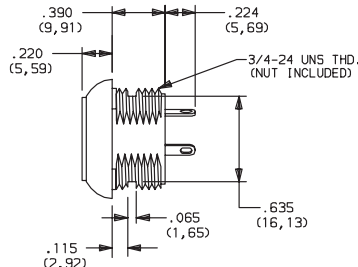
NOTE: All models provided with the same key code. For replacement keys or special features, consult Customer Service Center.



## TYPE



- W** (STD.) LOW PROFILE KEY SWITCH



OPTION CODE	COLOR
2	(STD.) BLACK
1	WHITE

NOTE: Standard housing color is black. Special colors or mixed housing and key plug colors available, consult Customer Service Center.



Third Angle Projection  
Dimensions are shown: IN (mm)  
Dimensions subject to change

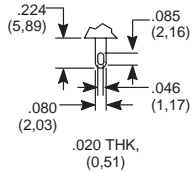
# C&K P Series Low Profile Key Switches

## FINISH

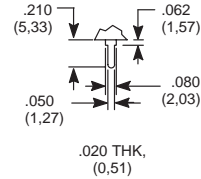
**M** (STD.) MATTE FINISH

## TERMINATIONS

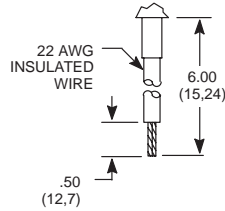
**03** (STD.) SOLDER LUG WITH HOLE



**02** PC THRU-HOLE

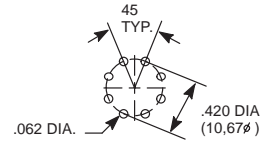


**WC** WIRE LEAD



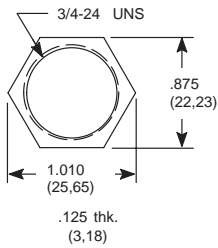
Black wire standard, other colors, gages, and lengths available, consult Customer Service Center. UL style 1015.

**PC MOUNTING**



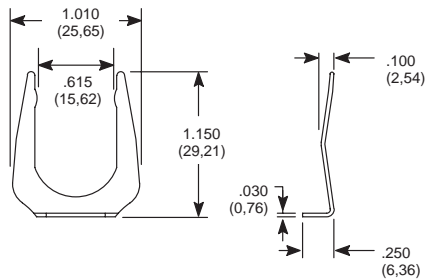
## MOUNTING STYLE

**N** (STD.) WITH NUT



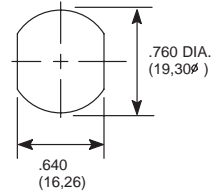
Nut part number: 175050700

**D** WITH CLIP



Clip part number: 175050300

**PANEL MOUNTING**



MOUNTING STYLE	PANEL THICKNESS
N (with nut)	.215 (5,46) max.
D (with clip)	.085-.105 (2,16-2,67)

## CONTACT MATERIAL

OPTION CODE	CONTACT AND TERMINAL MATERIAL	RATINGS	
		POWER	
<b>Q</b> (STD.)	SILVER <sup>2</sup>	POWER	4 AMPS @ 125 V AC OR 28 V DC; 2 AMPS @ 250 V AC (UL/CSA).
<b>B</b>	GOLD <sup>1</sup>	LOW LEVEL/DRY CIRCUIT	0.4 VA MAX. @ 20 V AC OR DC MAX.
<b>G</b>	GOLD OVER SILVER <sup>3</sup>	LOW LEVEL/DRY CIRCUIT OR POWER	0.4 VA MAX. @ 20 V AC OR DC MAX. OR 4 AMPS @ 125 V AC OR 28 V DC; 2 AMPS @ 250 V AC (UL/CSA).

CONTACT MATERIAL/APPLICATION RECOMMENDATIONS—SEE SECTION N.

<sup>1</sup> CONTACTS & TERMINALS: Copper, with gold plate over nickel plate.

<sup>2</sup> CONTACTS & TERMINALS: Copper, silver plated (Standard with all termination options).

<sup>3</sup> CONTACTS & TERMINALS: Copper, with gold plate over silver plate.

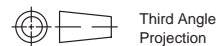
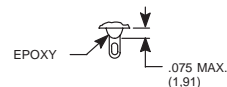
All models with all options when ordered with 'G' or 'Q' contact material.

**NOTE:** 'G' contact material is equivalent to both 'B' and 'Q' contact materials.

## SEAL

**NONE** (STD.) NO SEAL

**E** EPOXY SEAL



Dimensions are shown: IN (mm)  
Dimensions subject to change



K

Rotary